

Special Edition, Inc.

Yesterday's Classics Made for Today



Special Edition, Inc.

119 N. Liberty Drive
Bremen, Indiana 46506
(574) 546-4656 - Shop

www.BeckSpeedster.com



Special Edition, Inc.

Yesterday's Classics Made for Today

Special Edition, Inc. was formed in the early 1980's and has been instrumental in the evolution of the Specialty Automotive industry. By 1986, Kevin Hines of Special Edition, Inc. and Chuck Beck of Beck Development formed a partnership and the concept of easy to complete, high quality replication was born.

Our engineering methods and unparalleled design criteria combine to produce a superior product that will provide years of driving excitement. Our world wide reputation for quality, honesty and extraordinary customer service is the result of 30 years of dedication to our product and the people who love them.

Standard Features:

- Full Leather Interior
- Hand Laid Fiberglass Body
- 3" DOM Tubular Chassis
- Retractable Seatbelts
- Full Size Spare
- Manual Scissor Top w/Matching Side Curtains
- (5) Painted Steel Road Wheels
- 12,000 miles/ 12 month warranty



Special Edition, Inc.
1347 West North Street
Bremen, Indiana 46506
(574) 546-4656 - Shop
www.BeckSpeedster.com

Beck 550 Spyder

Specifications:

Wheelbase:	85"	[2.16 m]
Height:	40"	[1.02 m]
Length:	146"	[3.71 m]
Width:	61"	[1.55 m]
Curb weight:	1300 lbs	[590 kg]
Standard engine:	customer specific	
Front suspension:	fully adjustable twin torsion I-beam	
Rear suspension:	Torsion bar with adjustable spring plates.	
Brakes:	Front disc, rear drum and handbrake on rear wheels.	
Wheels:	Painted steel road wheels 15" x 4.5" front and 15" x 5.5" rear	
Tires:	165/80-15 front, 195/60-15 rear [plus one spare]	



Performance*:

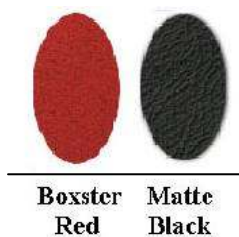
Standing Start:	0-60 mph in 5.8 seconds
Quarter mile:	13.6 secs @ 92 mph/148 kph
Top speed:	130 mph [209 kph]

**with a CB Performance 1915cc 125 hp engine and standard gearbox/axle ratios. Contact your local dealer to learn about available high performance options.*

Interior Color Options*



Both the Spyder 550 & 550S come standard with a leather interior, including the seats, gear shifter, and emergency brake boot. The leather hides are carefully selected to ensure years of durability and comfort without compromising the vintage feel.



Note: Custom colors available upon request.

Exterior Paint Options*

**Custom colors available upon request and consultation.*



Silver



Silver Blue

Disclaimer: We have made an effort to provide paint chips that closely represent the colors. However, due to all the possible variants -- light source, monitor quality, etc. -- we cannot guarantee that the images accurately represent the true colors. Please take this into consideration.



Special Edition, Inc.

Yesterday's Classics Made for Today

Deluxe Pre-Assembled Body Package

Starting at \$19,995.00

F.O.B. Bremen, Indiana

What is it?

The “**DELUXE PRE-ASSEMBLED BODY PACKAGE**” program provides the specialty automotive enthusiast with a quality product, in a complete and comprehensive package. This alternative affords a savings over the “Roller” or “Turn Key” versions by allowing you, the customer, to supply a portion of the parts and labor relating to the final assembly procedure, yet does not demand an inordinate amount of specialized skills or professional assistance such as painting, wiring, and upholstery.

This package includes ALL of the following:

- The complete hand-laid fiberglass body, painted with Automotive quality base coat/ clear coat. The doors, front hood with support rod, and rear deck lid with support rod are hinged, latched, weather stripped and fully adjusted.
- The body comes pre-mounted to a 3” tubular steel frame that is an integral part of the body/chassis system. It includes a fully adjustable front axle beam with torsion bars installed and rear suspension components complete to the spring plate assemblies. *Tubular steel is an extremely strong method of construction and gives the Spyder 550/550 S excellent torsional rigidity resulting in crisp handling, consistent door gap, and superior fit and finish.*
- The self-parking, 2-speed windshield wiper system is completely installed and wired.
- All of wiring is completely installed. This includes the 3-gage cluster, all switches, relays, engine harness, lighting and a complete fuse panel. The steering column with turn signal, emergency flasher and wiper switch is installed.
- The removable convertible top and steel scissor mechanism is completely assembled and operational.
- All latches, hinges, and release cables are installed and fully adjusted.
- Full leather interior is completely installed including original style, slotted bucket seats, leather wrapped steering wheel, shifter and parking brake boots.
- The interior is completely carpeted.
- The accelerator parking brake, clutch, and speedometer cables are installed. The cable shift mechanism is complete and pre-installed.
- The fuel tank, aluminum “Quick fill” gas cap, and fuel lines are installed.
- Pedals, dual circuit master cylinder, reservoir, and brake lines are all installed.

The “**DELUXE PRE-ASSEMBLED BODY PACKAGE**” is extremely complete. The builder need only supply the engine of his choosing, a transaxle, brakes, wheels, tires, lights, fluids and some hardware (most items available in the optional packages), some basic mechanical ability and approximately 25 to 30 hours of assembly time.

Prices are subject to change without notice. A \$5,000.00 deposit must accompany all orders. Please call for availability.

Special Edition, Inc.
119 N. Liberty Drive
Bremen, Indiana 46506
(574) 546-4656 - Shop
www.BeckSpeedster.com

Effective October 1, 2011



Special Edition, Inc.

Yesterday's Classics Made for Today

DELUXE "ROLLER" PACKAGE

Starting at \$26,456(less engine)

F.O.B. Bremen, Indiana

What is it?

The "Deluxe Roller Package" comes "rolling" to your door, ready to accept the engine you choose.. This package is ideal for someone who has a very specific engine supplier or desire to install a unique type of power train (i.e. battery operated) into our Beck Spyder.

This package includes ALL of the features of the "**Deluxe Pre-assembled Body Package**", plus the following items:

- A 4-Speed manual transaxle of your choice. (All transaxles are the swing axle style but may be modified with high performance parts, a variety of gear sets, and upgraded from drum to disc brakes for an additional charge.)
- The brake system is complete and operational, as is the parking brake system. Fine tuning of the alignment is still required.
- The steering components are completely installed and operational.
- Head & taillights, turn signals and license plate light are installed and wired..
- The engine harness is in place and ready to be attached to the motor.
- A set of 5 wheels and tires are mounted and balanced. Tire brands may vary with availability. Tire upgrades are available at additional cost.
- The side & rear view mirror are installed, along with the horn grills.
- "Spyder" badges are installed, left and right.
- Other optional items may be ordered and pre-installed as well. Please see the MSRP sheet for a list of our most popular add-ons.

Pricing Breakdown:

Deluxe-Body Package.....	\$19,995
Roller Package Assembly Fee.....	\$3000
Standard 4-speed manual (drum-to-drum) 4.12 Ring & Pinion transaxle.....	\$1400
3 completion packages.....	\$2061
	Total: \$25,456 (less engine)

How will I get my car?

This package can be transported by an automotive carrier service. They generally charge a small additional fee for handling "non-runners". Please call for an estimate.

Prices are subject to change without notice. A \$ 5,000.00 deposit must accompany all orders. Please call for availability.

Special Edition, Inc.
1346 West North St
Bremen, IN 46506
(574) 546-4656 – Shop
www.BeckSpeedster.com

Effective October 1, 2008



Special Edition, Inc.

Yesterday's Classics Made for Today

Suggested MSRP Pricing

Item	MSRP
Kits & Assembly	
Deluxe Pre-Assembled Body Package	\$19,995
Factory Assembly Fee	\$3000
Hardware Package	\$369
Suspension Component Package	\$1395
Brightwork Package	\$297
Transaxle (complete drum to drum assembly)	
Basic 4 speed manual 4.12 Ring & Pinion	\$1400
3.88 R&P Upgrade	\$220
ProStreet Upgrade (Recommended for engines 150+ hp)**	\$750
Rear disc brake upgrade	\$600
Mechanical Suggestions/Engine Options**	
<i>**All engine are CUSTOMER supplied</i>	
1915cc (125hp version) High Performance Engine	\$6400
2165cc (180hp) Ultra High Performance Engine	\$7500
Additional engine options available (larger and smaller)	CALL
Electric Rotary Fuel Pump	\$225
Setrab external oil cooler w/ AN fittings and stainless hose**	\$850
Optional Mechanical Upgrades	
Stock 4:1 Exhaust	\$300
Custom 1 5/8" Ceramic Coated Exhaust	\$650
Original Design Polished Stainless Exhaust	\$1800
Wide Five Bolt Pattern Upgrade (front disc/rear drum)	\$1500
Interior Options	
Nardi Classico 360mm Wooden Steering Wheel	475
Matching Wooden Shift Knob	95
Additional steering wheel options available (Banjo, Derrington, etc...)	CALL
Dash Grab Handle	100
Chrome Starter Button	100
12 Volt Accessory Plug (For Cell Phones/Radar Detectors/Etc)	100

Special Edition, Inc.
 119 N. Liberty Drive
 Bremen, IN 46506
 (574) 546-4656 – Shop
www.BeckSpeedster.com

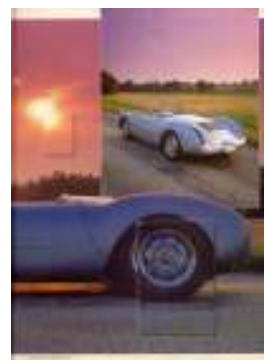
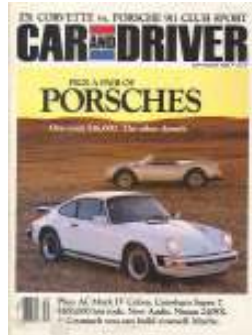
Effective October 1, 2011

Ivory Knob Upgrade	\$150
Original 550 Parking brake handle	\$650
AM/FM/CD Stereo System	\$500
Chrome Fire Extinguisher	\$185
Additional VDO Gauges (Clock, CHT, Oil Pressure)	\$225 Each
Racing Lap Belts 2 Point	\$300
Racing 5 Point Harness	\$325
Exterior Options	
Deluxe Cloth Tonneau Cover w/ Tenax Fasteners	\$500
Side View Mirror (Standard Style)	\$125
Matching Passenger Side Mirror – (Standard Style only)	\$125
GT Racing Mirror (Painted to match exterior paint)	\$350
GT Racing Mirror Passenger	\$350
Painted Darts on Rear Fenders	\$900
James Dean “Little Bastard” Decals	\$250
Helmet Fairing w/matching leather cushion	\$450
Original Style Fluted Headlight Lenses	\$125
Original Style Turn Signal and Taillights	\$500
Leather Bonnet Straps	\$190
Oil Cooler Grill (painted body color)	\$400
Front/Rear Jacking Points	\$475
Front/Rear Key Latches	\$400
German Haartz Cloth Upgrade	\$1200
Mesh Headlight Grills	\$275
Dual Hoop Chrome Roll Bars	\$2000
Single Triangulated Hoop SCCA Autocross Roll Bar (painted)	\$1500
Wendler Badges	\$125
Nurburing Badge	\$120
We specialize in custom fabrication, and building to customer specifications. If there is something you would like, but do not see, please call for a quote.	

Special Edition, Inc.
119 N. Liberty Drive
Bremen, Indiana 46506
(574) 546-4656 - Shop
www.BeckSpeedster.com

Effective October 1, 2011

Press Coverage – Spyder 550



Special Edition, Inc.
119 N. Liberty Drive
Bremen, Indiana 46506
(574) 546-4656 - Shop
www.BeckSpeedster.com

Frequently Asked Questions (FAQ's)

Q: What stages of completion do you offer?

A: We offer three separate stages:

- 1) The "deluxe pre-assembled body package", which is one of the most complete kits available today. The end user can assemble this stage in as little as one short weekend.
- 2) The "roller" package, which is ready to accept the engine of your choice
- 3) The "turn-key" package. Although Special Edition, Inc. *DOES NOT* directly supply engines or transaxles, it is still possible for the customer to receive a ready to drive speedster

Q: What type of engine can I use?

A: The Spyder is set up for a VW air-cooled type I engine of nearly any displacement. Our customers have also used engines such as the VW type IV (Porsche 914), Porsche 356 & Porsche 912.

Q: What are the most popular engines? What is the biggest engine I can use?

A1: The engine size/hp is limited only by budget and sanity. When selecting an engine, one must remember a few things:

- 1) the most powerful Spydres of the 50's only had about 130hp and
- 2) the Spyder has the aerodynamic qualities of a classic 50's racecar.

Q: I have seen other companies that offer a tubular frame vs. the VW bellypan. How is yours different?

A: The Beck/Chamonix 550 is modeled directly after the original Spyder 550 frame. While you will see other round tube frames in the industry, we have engineered our frame so that the torsional load is properly dispersed in the center of the car. Other companies have improperly engineered their frames, which results in the torsional load dispersing through the rear 10% of the frame. This causes an undesired "twisting" effect when accelerating.

- DOM tubing has a higher yield and tensile strength than aswelded steel. It is also smoother, cleaner, denser and more consistent.
- Round tubing is lighter than square tubing, yet has greater strength characteristics.
- Round tubing is more expensive than square tubing.
- Round tubing is available in higher-grade steel than square tubing.

Q: How do I insure my Spyder?

A: If your current carrier does not have the ability to ensure your new vehicle, several companies specialize in insuring replicas. Hagerty comes recommended and can be contacted at 1-800-922-4050 or www.hagerty.com.

Q: How do I register my Spyder?

A: Registration is not federally regulated, so it varies from state to state. You will need to check with your local BMV for your state's requirements. However, Beck products have been successfully registered in *all* 50 states.

Q: Does the Spyder come with a warranty?

A: Yes! We offer a 12 month/12,000 mile limited warranty. This covers your Spyder's contents and workmanship. The drivetrain components, as well as a few of our optional components, carry a warranty directly from their respective manufacturers.

Q: How does the Spyder hold up in resale value?

A: We have seen our products hold their value very well over the last 25 years. According to the Kelly Blue Book, the average car loses 65% of its value in the first 5 years. We have seen our products sell as high as 100%-120% of their original value, 10 years down the road!

Q: Do you offer financing?

A: Financing can be obtained through J.J. Best Banc & Co. Call 1-800-USA-1965 (or on the web at www.jjbest.com).



Special Edition, Inc.

Yesterday's Classics Made for Today

BECK SPYDER 550 CUSTOMER - ASSEMBLY DETAIL

Complete my Beck Spyder 550 as:

- Pre-Assembled Body Package
- A Deluxe Roller
- "Turn-Key"

The engine option I want is a:

- 1915cc Hi-Po
- 2165 cc
- Other _____

This engine is being built by _____ (Engine Company Name)

NOTE: Special Edition, Inc DOES NOT supply or install engines.

- Stock Exhaust
- Custom 1 5/8" Ceramic
- Original Styled Stainless Exhaust
- Other

TRANSAXLE DETAILS

- Basic 4 Speed Manual
- 3:88 Ring and Pinion
- 1st and 2nd gear custom ratio
- ProStreet Upgrade
- Rear Disc Brake upgrade
- Wide Five Bolt Pattern Upgrade
- Other _____

INTERIOR OPTIONS

- Nardi Replica Wooden Steering Wheel
- Wooden Shift Knob
- Dash Grab Handle (passenger side)
- 12 Volt Auxiliary Outlet
- Other _____
- Other _____

EXTERIOR OPTIONS

- Cloth Tonneau Cover w/ Tenax Fasteners
- Passenger Side Mirror – Standard
- GT Racing Mirror
- Leather Bonnet Straps
- Racing Stripes
- Helmet Fairing
- Fluted Lenses
- Original Turn Signals/Taillights
- Special Body Badges
- Other _____

Other options/Special Instructions _____



Special Edition, Inc.

Yesterday's Classics Made for Today

Beck Spyder 550 Customer Order Form

Use this Order form regardless of whether you are ordering a: DELUXE PRE-ASSEMBLED BODY PACKAGE, DELUXE "ROLLER" PACKAGE or "TURN-KEY".

Name _____

Address _____

City _____ State _____ Zip _____

Home Phone (____) _____ - _____ Other # (____) _____ - _____

E-mail Address (optional) _____

- "Pre-assembled Body Package".....\$19,995.00
- "Roller" Package.\$ 26,456.00
- "Turn Key".....price by formal quote only
- I am submitting additional options on a separate Assembly Detail Sheet. (Attached)

Paint Color Choice*:

- Metallic Silver
- Silver Blue

*Custom colors available upon request. Additional fees may apply. Please call for assistance or enter Sikkens Paint code here: _____

Interior Color Choices:

Top:

- Black Vinyl
- Other _____

Interior:

- Black
- Whiskey Tan**
- Navy Blue**
- Boxster Red
- Dove Grey**

** Call for availability of these limited edition interior colors.

A \$5,000.00 deposit is required with your order.

Customer Signature

Date

Dealer Acceptance (required for Turn-Key vehicles)

Date

This signed agreement represents formal acceptance of Dealers offer. This price sheet is effective Jan. 1 2006 and is subject to change without notice. The manufacturer reserves the right to make changes at any time, without notice or obligation, in colors, specifications, materials, models and prices.

Special Edition, Inc.
119 N. Liberty Drive
Bremen, IN 46506
(574) 546-4656 – Shop
www.BeckSpeedster.com

Effective October 1, 2011